



## Patented Precision Work

TRACOE *vario* is a soft, flexible (DEHP-free) tube with a patented adjustable neck flange. By means of a practical push-button mechanism, the flange can be moved and adjusted to the individual patient. In this way, the correct length can be achieved. A scale ensures the exact positioning of the neck flange in preparation for a tube change.

Positioning the flange by using the grey push-button and locking it by moving the orange lever upwards. Since no screw closure is used, no pressure at all is exerted on the trachea.



## Highly Adaptable

The flexible wings on the flange of the TRACOE *vario* tube can be adjusted independently of one another, providing further opportunities to accommodate the individual patient's anatomy. The right solution for each patient can be selected from the eight types of TRACOE *vario* tracheostomy tube available: whether reinforced with a metal spiral, made of transparent plastic (with radio-opaque contrast lines), fenestrated, with or without a cuff.

The extra-long TRACOE *vario* XL with metal spiral and TRACOE *vario* extract in transparent plastic equipped with a subglottic suction line, both with cuffs, are special varieties – naturally also available in the standard lengths.



**REF 450**



## TRACOE *vario* Tracheostomy Tube

spiral-reinforced, with adjustable neck flange, low pressure cuff, scale and 15 mm connector

Including: ♦ obturator and neck strap  
♦ in sterile package



**REF 460**



## TRACOE *vario* Tracheostomy Tube

with adjustable neck flange, low pressure cuff, X-ray contrast line, scale and 15 mm connector

Including: ♦ obturator and neck strap  
♦ in sterile package



**REF 470**



## TRACOE *vario* extract Tracheostomy Tube

with adjustable neck flange, low pressure cuff, subglottic suction line, X-ray contrast line, scale and 15 mm connector

Including: ♦ 2 connectors for suction pump  
♦ obturator and neck strap  
♦ in sterile package



**REF 455**



## TRACOE *vario* Tracheostomy Tube

spiral-reinforced, with adjustable neck flange, scale and 15 mm connector

Including: ♦ obturator and neck strap  
♦ in sterile package



REF 450-P



### TRACOE *vario* Tracheostomy Tube

with minimally traumatic insertion system, spiral-reinforced, adjustable neck flange, low pressure cuff, scale and 15 mm connector

- Including:
- ◆ lubricating gel
  - ◆ obturator and neck strap
  - ◆ in sterile package

As percutaneous set in REF 420



REF 460-P



### TRACOE *vario* Tracheostomy Tube

with minimally traumatic insertion system, adjustable neck flange, low pressure cuff, X-ray contrast line, scale and 15 mm connector

- Including:
- ◆ lubricating gel
  - ◆ obturator and neck strap
  - ◆ in sterile package

As percutaneous set in REF 423



REF 470-P



### TRACOE *vario* extract Tracheostomy Tube

with minimally traumatic insertion system, adjustable neck flange, low pressure cuff, subglottic suction line, X-ray contrast line, scale and 15 mm connector

- Including:
- ◆ lubricating gel
  - ◆ 2 connectors for suction pump
  - ◆ obturator and neck strap
  - ◆ in sterile package

As percutaneous set in REF 422



REF 464



### TRACOE *vario* Tracheostomy Tube

with adjustable neck flange, fenestrated, X-ray contrast line, scale and 15 mm connector

- Including:
- ◆ obturator and neck strap
  - ◆ in sterile package



**REF 451** **XL**

**TRACOE vario XL Tracheostomy Tube**  
spiral-reinforced, with adjustable neck flange,  
low pressure cuff, scale and 15 mm connector

Including: ♦ obturator and neck strap  
♦ in sterile package



**REF 461** **XL**

**TRACOE vario XL Tracheostomy Tube**  
with adjustable neck flange, low pressure cuff,  
X-ray contrast line, scale and 15 mm connector

Including: ♦ obturator and neck strap  
♦ in sterile package



**REF 471** **XL**

**TRACOE vario extract XL Tracheostomy Tube**  
with adjustable neck flange, low pressure cuff,  
subglottic suction line, X-ray contrast line, scale  
and 15 mm connector

Including: ♦ 2 connectors for suction pump  
♦ obturator and neck strap  
♦ in sterile package





**REF 451-P XL**

**TRACOE vario XL Tracheostomy Tube**  
with minimally traumatic insertion system,  
spiral-reinforced, adjustable neck flange,  
low pressure cuff, scale and 15 mm connector

Including: ♦ lubricating gel  
♦ obturator and neck strap  
♦ in sterile package

**As percutaneous set in REF 421**



**REF 461-P XL**

**TRACOE vario XL Tracheostomy Tube**  
with minimally traumatic insertion system,  
adjustable neck flange, low pressure cuff,  
X-ray contrast line, scale and 15 mm connector

Including: ♦ lubricating gel  
♦ obturator and neck strap  
♦ in sterile package

**As percutaneous set in REF 424**



**REF 471-P XL**

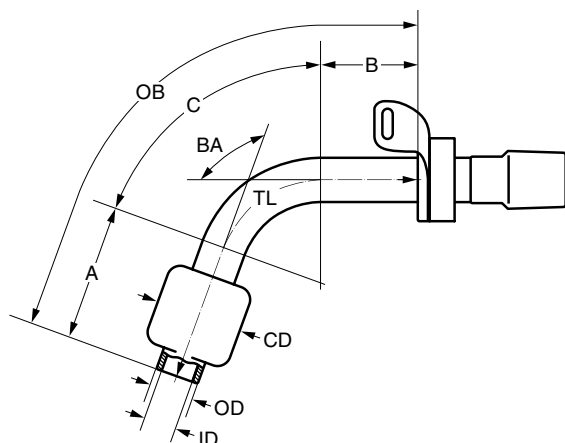
**TRACOE vario extract XL Tracheostomy Tube**  
with minimally traumatic insertion system,  
adjustable neck flange, low pressure cuff,  
subglottic suction line, X-ray contrast line,  
scale and 15 mm connector

Including: ♦ lubricating gel  
♦ 2 connectors for suction pump  
♦ obturator and neck strap  
♦ in sterile package

**As percutaneous set in REF 425**

# Technical Data

## TRACOE vario



REF 450, REF 455, REF 460

*in sizes 06 – 11*

REF 464

*in sizes 07 – 09*

REF 470

*in sizes 07 – 10*

REF 450-P, REF 460-P

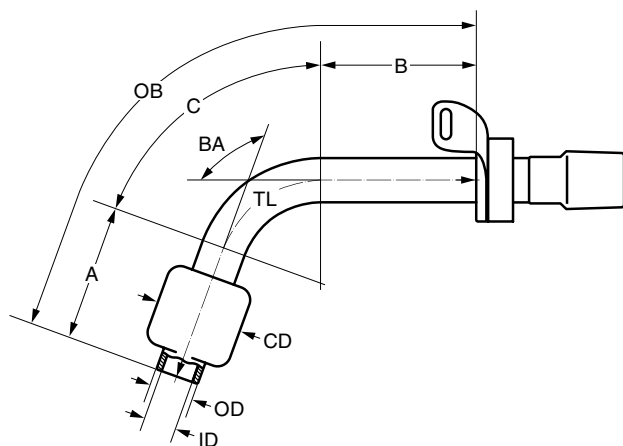
*in sizes 07 – 09*

REF 470-P

*in sizes 08 – 09*

Size	ID mm	OD mm	A mm	C mm	B mm	TL mm	OB mm	BA °	CD mm
06	6.0	8.2	30	28	12	70	76	100	18
07	7.0	9.7	33	32	15	80	86	100	22
08	8.0	11.2	35	35	20	90	97	100	28
09	9.0	12.3	38	35	27	100	106	100	30
10	10.0	13.7	38	37	35	110	120	100	32
11	11.0	14.8	38	37	35	110	121	100	34

## TRACOE vario XL



REF 451, REF 461, REF 471

*in sizes 07 – 10*

REF 451-P, REF 461-P

*in sizes 07 – 09*

REF 471-P

*in sizes 08 – 09*

Size	ID mm	OD mm	A mm	C mm	B mm	TL mm	OB mm	BA °	CD mm
07	7.0	9.7	35	36	33	104	110	100	22
08	8.0	11.2	37	43	40	123	128	100	28
09	9.0	12.3	38	43	45	126	134	100	30
10	10.0	13.7	38	52	45	135	146	100	32

**ID:** inside diameter (clear width) at bottom of cannula; **OD:** outside diameter at bottom of cannula; **A:** length; **C:** length; **B:** length; **TL:** length along centre line; **OB:** length along outer bend; **BA:** bending angle; **CD:** cuff diameter

To order, specify **REF + size**, e. g. **REF 450-08**

# Speciality and Scope of Supply

## The Subglottic Suction Line



In all TRACOE tracheostomy tubes equipped with subglottic suction lines, the opening of the line is just above the cuff. Secretions in the subglottic space can therefore be suctioned off at the lowest point of collection. This reduces the risk of bacterially contaminated secretions entering the lower respiratory tract and the risk of developing aspiration pneumonia.

The TRACOE *vario* opening is designed to minimise mucosal damage from suctioning.

## Highly Adaptable



The TRACOE *vario* tube has a patented adjustable neck flange. By means of a practical push-button mechanism, the flange can be moved along the tracheostomy tube and adjusted to the individual patient. The flange is fixed securely in position by moving the orange locking lever upwards. Since no screw closure is used, no pressure at all is exerted on the trachea.

The flexible wings of the TRACOE *vario* neck flange can be adjusted independently, providing further opportunities to accommodate the individual patient's anatomy.

## Scope of Supply of TRACOE *vario* and *vario* XL Tubes



All TRACOE *vario* and *vario* XL tubes are supplied with an obturator, a wide adjustable neck strap, and a product info card with two detachable labels.

Lubricating gel is also supplied with the *vario* P-tubes.